

## 36m Fire Hose Reel



### SERVICING INSTRUCTIONS:

#### GENERAL NOTES:

- This Fire Hose Reel is designed to provide a maintenance free life. In the case of water leaks from the product, the following maintenance procedures should be followed. Field maintenance or replacement of hose fittings or clamps is not recommended.

#### WATERWAY BEARING MAINTENANCE PROCEDURE:

1. Ensure inlet ball valve is closed, open nozzle to release pressure.
2. Unwind the hose.
3. Remove the black plastic instruction cover (25), by gently lifting with a screw driver.
4. Using a 6mm socket, loosen and remove the four rod screws (24) which secure the front (23) and rear (12) plates to the hub.
5. Allow the back plate to rest on the fixed axle block (8), and remove the front plate.
6. Using a 16mm socket, loosen and remove the M16 locknut (22).
7. Remove the hub (18, 19) and waterway assembly (13) from the fixed axle block. Note: some water spillage from the waterway may occur during this part of the procedure.
8. Inspect the tapered bearing surface of the axle block for signs or wear or damage to o-ring seals.
9. In the unlikely event that the bearing surface of the axle block is marked or worn, the complete axle block assembly (8, 27) must be replaced.
10. If the bearing surfaces are in good condition, replace and grease o-ring seals.
11. Re-assembly hose reel as per steps 19 to 25.

Free call: 1300 55 34 73

Web: [www.antec.com.au](http://www.antec.com.au)

Email: [anteceng@antec.com.au](mailto:anteceng@antec.com.au)

#### NSW (Head Office)

9 Chicago Avenue  
Blacktown NSW 2148  
P: +61 2 9622 9622  
F: +61 2 9622 9199

#### VICTORIA

90 Turner Street  
Port Melbourne VIC 3207  
P: +61 3 8645 3222  
F: +61 3 9646 7945

#### QUEENSLAND

5/429 Creek Road  
Mt Gravatt QLD 4122  
P: +61 7 3420 4099  
F: +61 7 3420 4033

#### SOUTH AUSTRALIA

70 Grand Junction Road  
Kilburn SA 5084  
P: +61 8 8304 7543  
F: +61 8 8304 7544

#### WESTERN AUSTRALIA

2/17 Baile Road  
Canning Vale WA 6155  
P: +61 8 6350 9600  
F: +61 8 6350 9601

## 36m Fire Hose Reel



### REPLACEMENT OF FIXED AXLE BLOCK:

12. Where the fixed axle block is found to be damaged in Step 9 above, it must be replaced.
13. With the unit partially disassembly as defined above, disassemble the inlet galvanised union (29) from the inlet pipe (27).
14. The fixed axle block can now be lifted up and slid from the wall bracket (26).
15. Remove the galvanised union piece and hose guide from the inlet pipe.
16. Re-assemble the hose guide and galvanised union on the new fixed axle block (8, 27).
17. Re-insert the new fixed axle block, into the wall bracket and reconnect the galvanised union.
18. Re-assembly hose reel as per steps 19 to 25.

### RE-ASSEMBLING THE FIRE HOSE REEL:

19. Slide the hub assembly (18, 19, 13...16) back on to the fixed axle block.
20. Using a 16mm socket, replace and tighten the M16 locknut.
21. Re-insert the four rod screws through the front plate, the hub assembly, and the back plate and secure with 6mm nuts.
22. Replace the plastic front cover plate.
23. Close the nozzle, open the inlet valve to pressurise the hose. Check for leaks, if found repeat necessary steps as per this procedure.
24. Rewind the hose by rotating hose reel in clockwise direction.
25. Locate the nozzle in the interlock retainer (31), close the inlet valve to turn off supply and retain the nozzle.

### TOOLS REQUIRED:

- Plain screwdriver
- Molybdenum disulphide grease
- M6 socket
- M16 socket
- Shift spanner

Free call: 1300 55 34 73

Web: [www.antec.com.au](http://www.antec.com.au)

Email: [anteceng@antec.com.au](mailto:anteceng@antec.com.au)

#### NSW (Head Office)

9 Chicago Avenue  
Blacktown NSW 2148  
P: +61 2 9622 9622  
F: +61 2 9622 9199

#### VICTORIA

90 Turner Street  
Port Melbourne VIC 3207  
P: +61 3 8645 3222  
F: +61 3 9646 7945

#### QUEENSLAND

5/429 Creek Road  
Mt Gravatt QLD 4122  
P: +61 7 3420 0890  
F: +61 7 3420 4033

#### SOUTH AUSTRALIA

70 Grand Junction Road  
Kilburn SA 5084  
P: +61 8 8304 7543  
F: +61 8 8304 7544

#### WESTERN AUSTRALIA

2/17 Baile Road  
Canning Vale WA 6155  
P: +61 8 6350 9600  
F: +61 8 6350 9601

## 36m Fire Hose Reel

### FIXED TYPE FIRE HOSEREEL ASSEMBLY & PARTS LIST

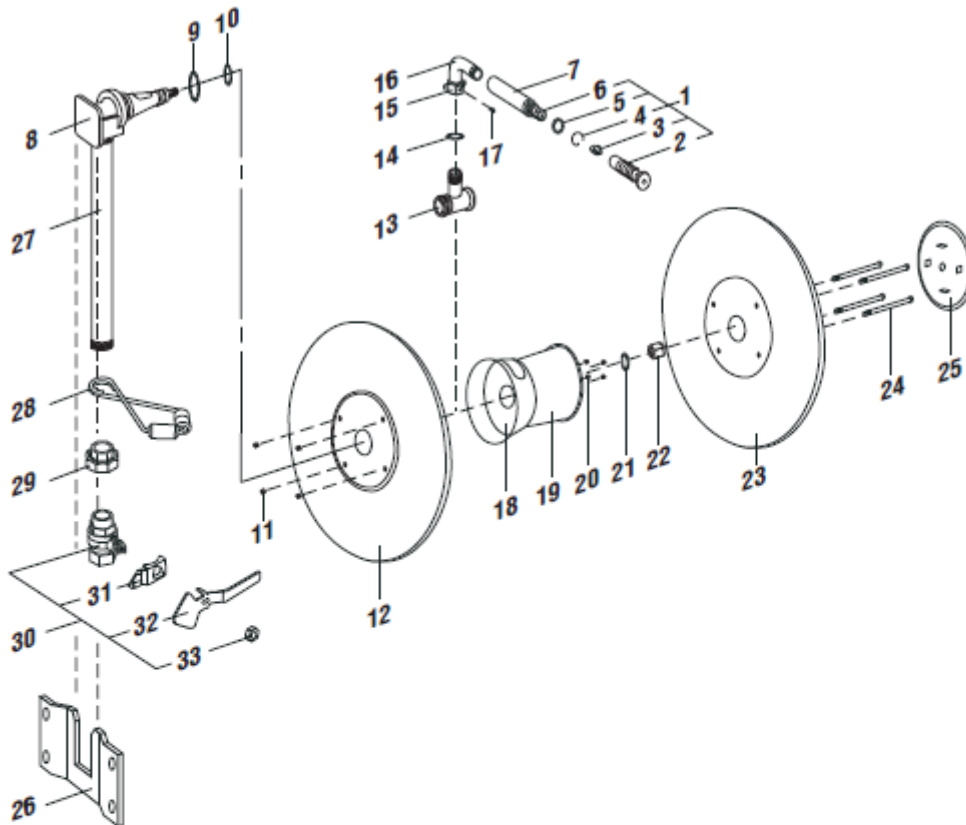


Fig:	Part No:	Description:
1	HR-0350	Nozzle Assembly
2	HR-0351	Nozzle Head
3	HR-0352	Nozzle Stopper
4	HR-0353	Nozzle Wire Clip
5	HR-0354	Nozzle 'O' Ring
6	HR-0355	Nozzle Tail
7	HR-0360	Hose Assembly c/w Nozzle & Tailpiece Pressure/ Leak Tested
8	HR-0300	Fixed Axle Block
9	HR-0190	Nitrile 'O' Ring
10	HR-0200	Nitrile 'O' Ring
11	HR-0160	M6 Locknut
12	HR-0080	Reel Disc Inner
13	HR-0050	Tee Waterway
14	HR-0210	Nitrile 'O' Ring
15	HR-0070	Wing Nut
16	HR-0065	Hose Connector

Fig:	Part No:	Description:
17	HR-0240	Allen Screw
18	HR-0100	200mm dia x 70mm(L) Hub
19	HR-0130	200mm dia x 113mm(L) Hub
20	HR-0140	Screws
21	HR-0220	Plastic Washer
22	HR-0150	M16 Locknut
23	HR-0090	Reel Disc Outer
24	HR-0122	Rod Screws
25	HR-0230	Plastic Instruction Cover
26	HR-0010	Axle Wall Mounting Plate
27	HR-0340	Inlet Pipe
28	HR-0330	Hose Guide Assembly
29	HR-0320	Union
30	HR-0310	Ball Valve Assembly
31	HR-0311	Interlock Retainer
32	HR-0312	Interlock Handle
33	HR-0313	Interlock Nut

Free call: 1300 55 34 73

Web: [www.antec.com.au](http://www.antec.com.au)

Email: [anteceng@antec.com.au](mailto:anteceng@antec.com.au)

#### NSW (Head Office)

9 Chicago Avenue  
Blacktown NSW 2148  
P: +61 2 9622 9622  
F: +61 2 9622 9199

#### VICTORIA

90 Turner Street  
Port Melbourne VIC 3207  
P: +61 3 8645 3222  
F: +61 3 9646 7945

#### QUEENSLAND

5/429 Creek Road  
Mt Gravatt QLD 4122  
P: +61 7 3420 0890  
F: +61 7 3420 4033

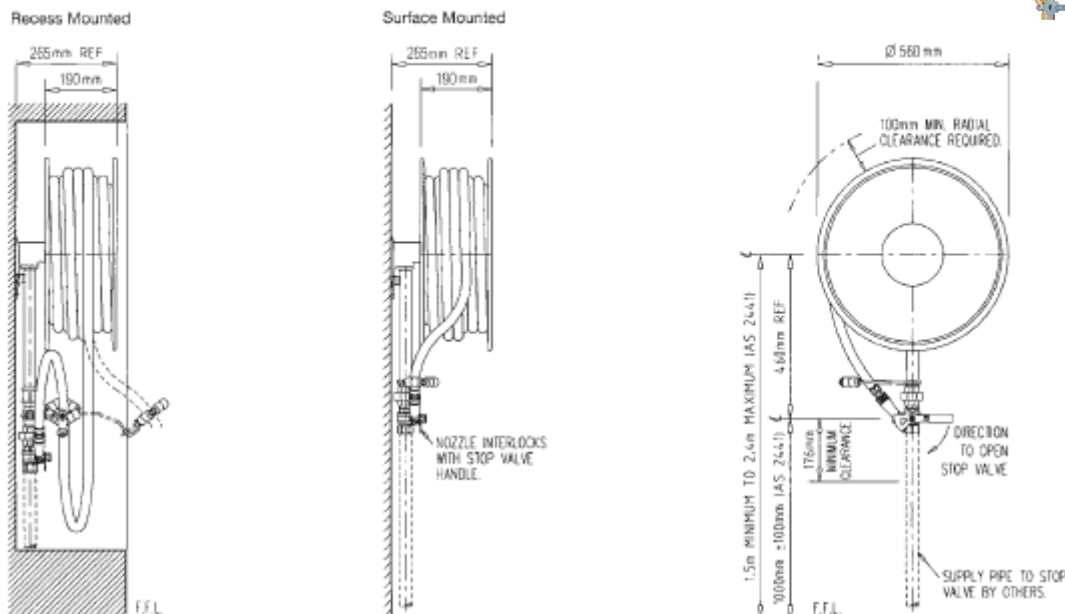
#### SOUTH AUSTRALIA

70 Grand Junction Road  
Kilburn SA 5084  
P: +61 8 8304 7543  
F: +61 8 8304 7544

#### WESTERN AUSTRALIA

2/17 Baile Road  
Canning Vale WA 6155  
P: +61 8 6350 9600  
F: +61 8 6350 9601

## 36m Fire Hose Reel



Description	Model Surface/Recess
Part Number	FS4049
Standard Hose Length & Dia.	36 metres x 19mm Dia.
Approvals	AS/NZS 1221
Minimum Inlet Pressure	220 kPa
Maximum Working Pressure	1000 kPa
Side Plates	Cold Rolled Mild Steel Epoxy Polyester Coated
Gland	Alloy LM25
Spindle	Alloy LM25
Bearing	Alloy LM25
Mounting Bracket	Mild Steel Galvanised

Description	Model Surface/Recess
Support Assembly	Mild Steel Galvanised
Hoseguide Assembly	Mild Steel Galvanised
Union	Malleable Iron Galvanised
Ball Valve Assembly	Brass / Mild Steel Handles Zinc Plate / DR
Nozzle Assembly	Brass
Drum	Deep Drawn Cold Rolled Mild Steel
Tailpiece	Acetal Copolymer
Hose Connector	

Antec provides the information contained in this brochure as a guide only for your information. Antec has taken reasonable care to ensure the accuracy of the material but you should not rely on the whole or part of the information. Antec expressly disclaims all liability whatsoever for (including any direct or indirect loss or damage, costs or expenses howsoever incurred by any person) or reliance on the whole or any part of the information contained in or omitted from this brochure. Antec recommends that you verify any information regarding products with your independent expert adviser and rely solely on that adviser's recommendations.

Free call: 1300 55 34 73

Web: [www.antec.com.au](http://www.antec.com.au)

Email: [anteceng@antec.com.au](mailto:anteceng@antec.com.au)

### NSW (Head Office)

9 Chicago Avenue  
Blacktown NSW 2148  
P: +61 2 9622 9622  
F: +61 2 9622 9199

### VICTORIA

90 Turner Street  
Port Melbourne VIC 3207  
P: +61 3 8645 3222  
F: +61 3 9646 7945

### QUEENSLAND

5/429 Creek Road  
Mt Gravatt QLD 4122  
P: +61 7 3420 0890  
F: +61 7 3420 4033

### SOUTH AUSTRALIA

70 Grand Junction Road  
Kilburn SA 5084  
P: +61 8 8304 7543  
F: +61 8 8304 7544

### WESTERN AUSTRALIA

2/17 Baile Road  
Canning Vale WA 6155  
P: +61 8 6350 9600  
F: +61 8 6350 9601